

# Brian Head

Let Black Diamond be your year round get-a-way. Neighboring the renowned Brian Head Resort, you'll enjoy some of the finest powder skiing and snowboarding in the country. Snowshoeing and snowmobile riding on the miles and miles of accessible trails is also a favorite winter pasttime.

Summertime offers its own adventures with mountain biking, ATV trails, fishing, hiking or visiting the nearby National Parks. All in cool 70 degree weather!

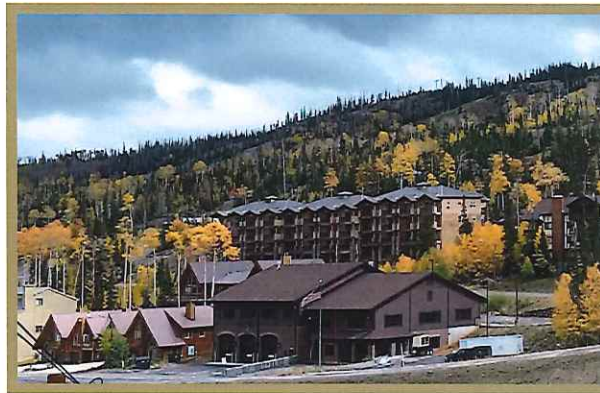
Brian Head is an outdoor recreation haven.



Your Black Diamond condo offers privacy, but is also the perfect gathering spot for friends and family. Floor plans offer ample space to keep your guests comfortable, while building the memories that last a lifetime.

## Location, Location, Location...

Eight unique ski-in, ski-out luxury units to be constructed in the next phase of our beautiful complex. With easy access to the Resort, snow mobile and ATV trails, Bristlecone Pond and the Town park, Black Diamond is truly the gem of Brian Head, Utah.



Directions: From Hwy 15 in Southern Utah, take exit 75 to Hwy 143. Approximately 14 miles, just past the Brian Head Resort, turn left on Vasels Road. Black Diamond is at the top of the hill at 565 Vasels Road.

- \* Appox. 3 hours from Las Vegas
- \* 3 1/2 hours from Salt Lake City
- \* 7 hours from Los Angeles

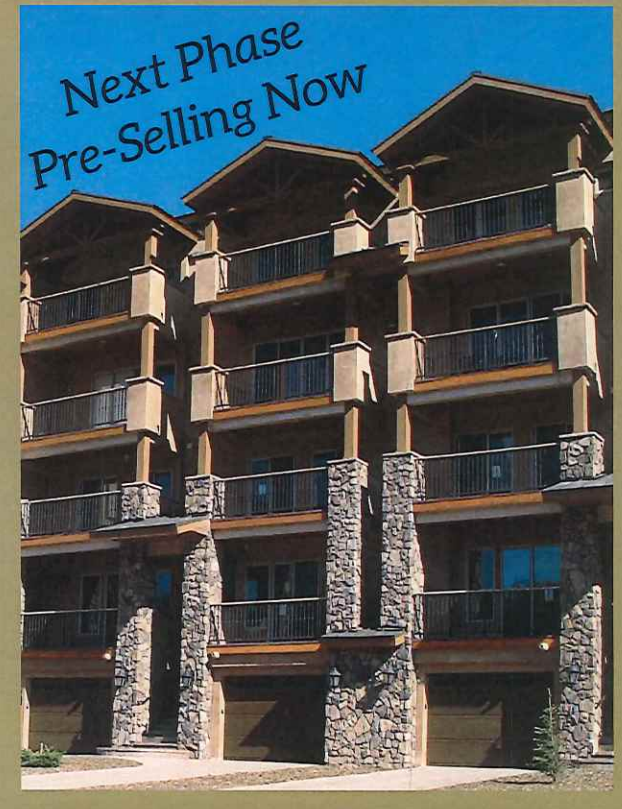
For more information, please contact:

**Black Diamond:** sdanko44@gmail.com  
Steve 702-429-7606 or Tim 562-762-5162

**High Country Realty:**  
sellsbrianhead@infowest.com  
Carrie Dever 435-590-3262



# Black Diamond Luxury Condominiums



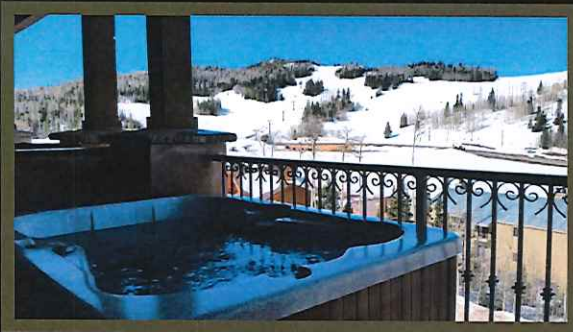
565 Vasels Road Brian Head Utah

**Available December 2018**

**8 New Deluxe Units  
Offered**

[www.blackdiamondatbrianhead.com](http://www.blackdiamondatbrianhead.com)

## Black Diamond



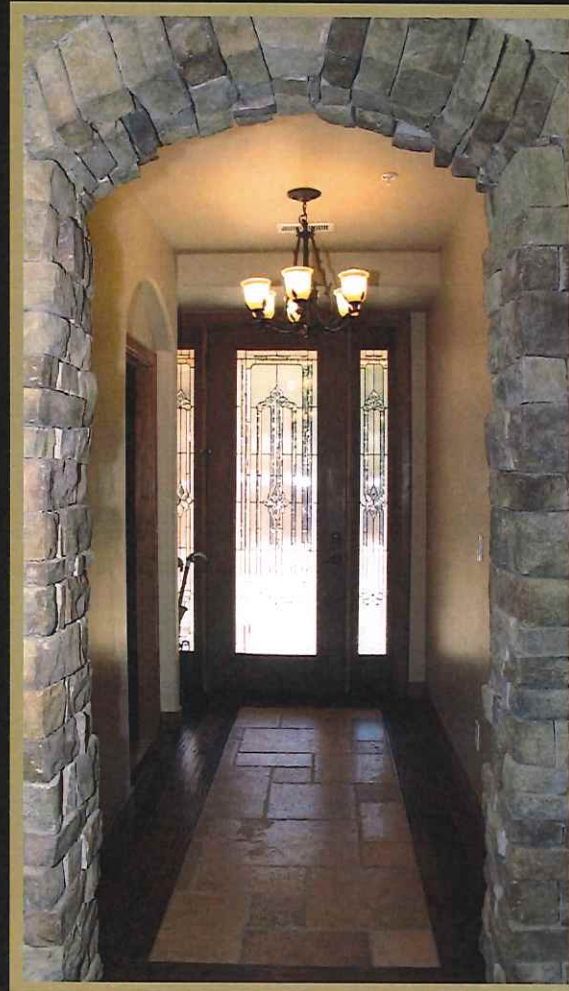
Enjoy incredible vistas from your own private hot tub. A treat your guests will love after a day on the slopes.

## Distinctive Finishes



Available options include granite countertops, travertine floors and master bath jacuzzi tubs.

## Step into Luxury



Construction scheduled for 8 additional units. Select your floorplan and custom finishes today.

## Welcome Home



## Exquisite Features

- \* Open Concept Design
- \* Natural Gas Stone Fireplaces
- \* Spectacular Views
- \* Attached, Oversized Garages
- \* Spacious 3-5 Bedroom Floorplans
- \* 3-5 Bathroom options
- \* Energy Efficient
- \* Hot Tub available on your deck
- \* Private Entrance and Mud Room
- \* Optimal Soundproofing
- \* Laundry hook-ups in each unit
- \* High speed internet & digital cable
- \* Most competitive HOA fees in Brian Head
- \* And more....